

PALIONERI COTTAGE REF. 400

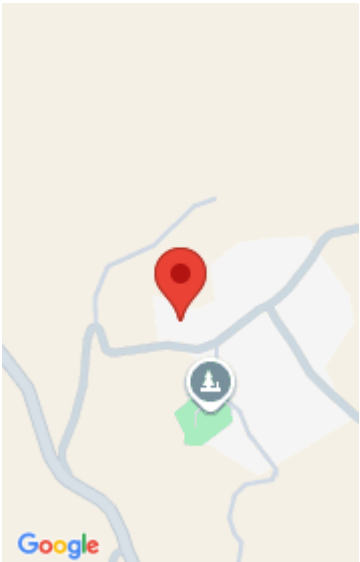
<https://theasisproperties.gr>

Palioneri



Authentic two-storey stone-built house, fully renovated, located in a traditional village near Pylos, Mountain views, Plot size 293.85 m<sup>2</sup> with stone-built borders, Total living area 186.14 m<sup>2</sup>, Ground floor with open-plan area + 1 bathroom, Upper floor with open plan area and large veranda, Private Parking Area, Easy Access

- Houses
- 186.14 m<sup>2</sup>



Call us now

Phone: +30 6944596983  
Email: [info@theasisproperties.gr](mailto:info@theasisproperties.gr)  
Address: Tsiklitira & Filellinon. 24001, Pylos

THEASIS  
REAL ESTATE

---

## Basics

**Date added:** Added 1 year ago

**Lot size, m<sup>2</sup>:** 293.85 m<sup>2</sup>

**Type:** Houses

**Area, m<sup>2</sup>:** 186.14 m<sup>2</sup>

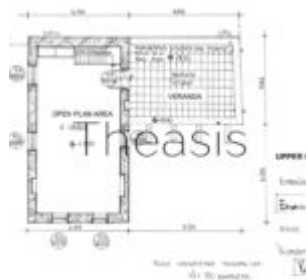
---

## Key Features

**Property Details:** Authentic two-storey stone-built house, fully renovated, located in a traditional village near Pylos, Mountain views, Plot size 293.85 m<sup>2</sup> with stone-built borders, Total living area 186.14 m<sup>2</sup>, Ground floor with open-plan area + 1 bathroom, Upper floor with open plan area and large veranda, Private Parking Area, Easy Access

---

## Plans



---

## Details

**Ref.No.:** 400



### Call us now

Phone: +30 6944596983

Email: [info@theasisproperties.gr](mailto:info@theasisproperties.gr)

Address: Tsiklitira & Filellinon, 24001, Pylos

THEASIS  
REAL ESTATE